

HOSE REEL 36M X 19MM SWING ARM WITH CABINET

PART NUMBER: HR1936SA-CAB

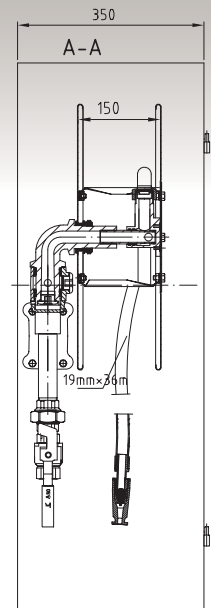


- Wall mounted powder coated cabinet with swing arm 36m hose reel attached to internal bracket
- Water travels through swing arm mechanism, reducing issues with connecting hoses
- Easy to use swing out mechanism which allows easy unspooling in desired direction
- Comes with ball valve, M/F union assembly and hose guide
- Standard 36m x 19mm hose reel with twist action brass nozzle
- Cabinet features non-locking flush handle
- Manufactured to AS/NZ1221



HOSE REEL 36M X 19MM SWING ARM WITH CABINET

PART NUMBER: HR1936SA-CAB



DIMENSIONS

Cabinet: W740 x D350 x H1040mm

Reel: W550 x D150mm

Hose: 36m x 19mm

MATERIAL

Cabinet: Metal powder coated red

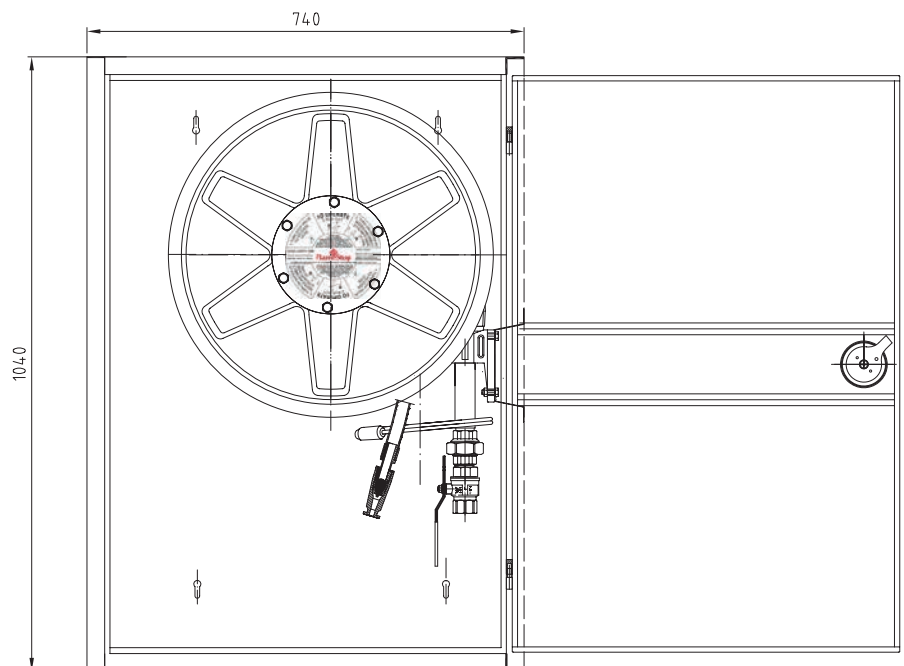
Drum: Steel signal red

Hose: PVC

Nozzle: Brass

CONTENTS

Cabinet, reel, ball valve,
male/female union, hose guide



Hose reel arm comes with wall mounting base plate that can easily be installed to the bracket inside the cabinet using nuts provided.

